

FLEX SPACE FOR LEASE

Northwest Business Center



11 Gwynns Mill Court - Owings Mills, MD 21117

Building Information

Building Size: 46,750 SF
Available SF: Suite 11-N: 6,250 SF

Highlights

6,250 SF of flex space, with 1,838+/- SF of office space

One 8' x 10' loading dock; Wet sprinkler system

16'-6" ceiling height in warehouse

Located in Northwest Business Center, an established business park with plentiful parking and lush landscaping

Less than one-half mile to shopping and restaurants at Foundry Row and Metro Centre; near retail amenities on Reisterstown Rd

Excellent access to I-795 and I-695

For More Info Please Contact:

David Paulson, SIOR
443-330-4804
dpaulson@blueobrecht.com

Gail Chrzan
443-330-4807
gchrzan@blueobrecht.com

J.C. Beese, III
443-330-4809
jcbeese@blueobrecht.com

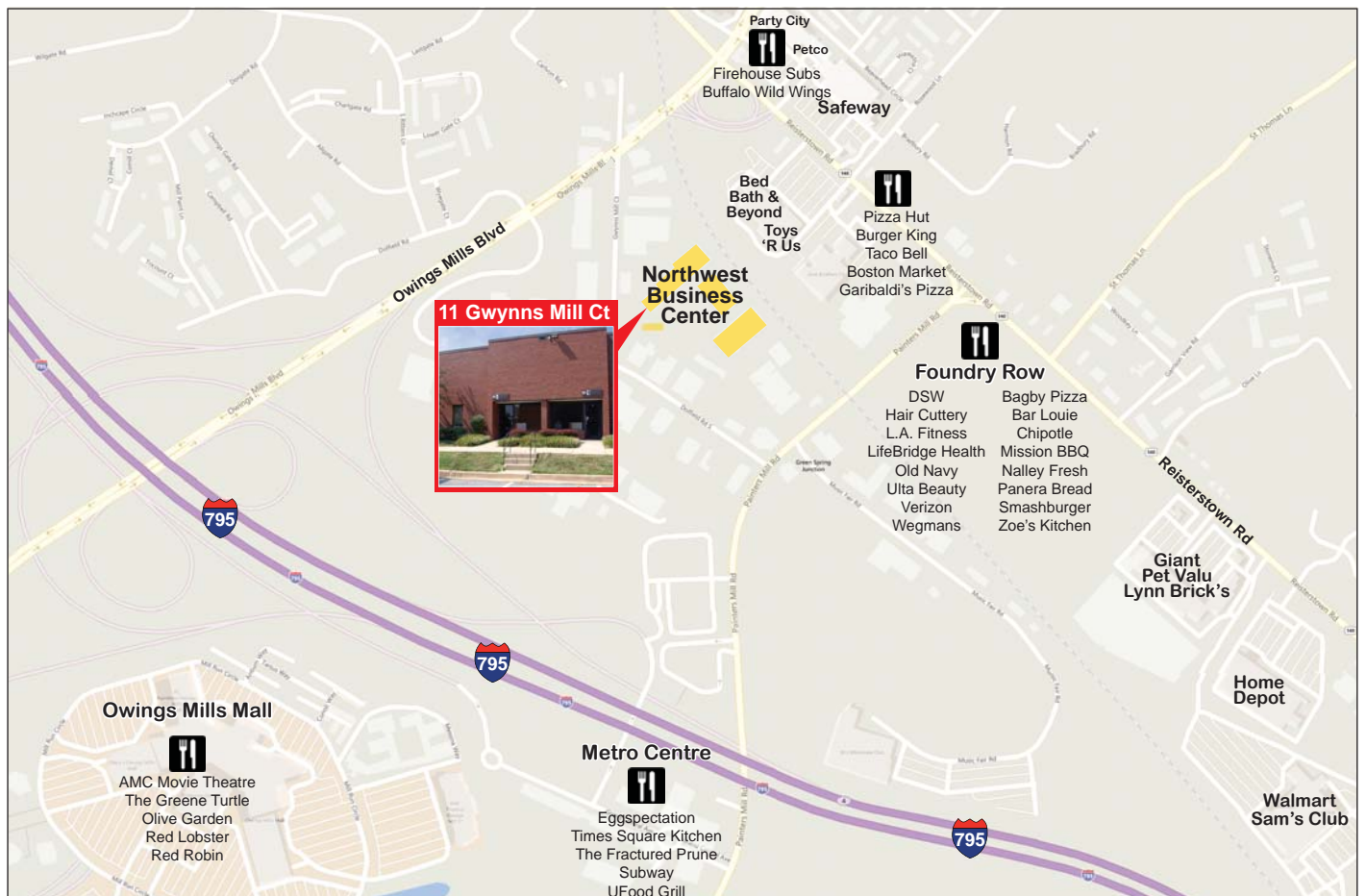
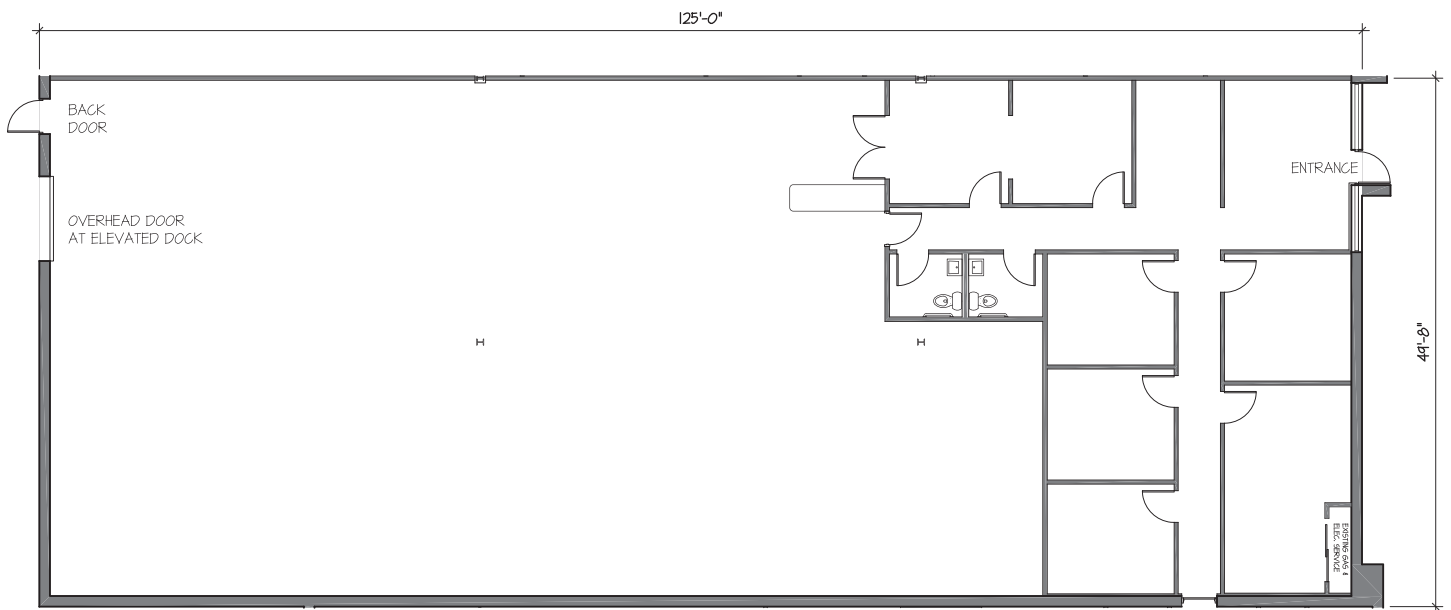


**BLUE &
OBRECHT**

Blue & Obrecht Realty, LLC
9475 Deereco Road, Suite 200
Timonium, MD 21093
410-561-5568

FLEX SPACE FOR LEASE

11-N Gwynns Mill Court



Information is from sources deemed reliable, but no warranty or representation is made to the accuracy thereof. Information is submitted subject to errors, omissions, prior sale, or lease withdrawal without notice.